



FARMHOUSE

# COUNTRYSIDE A-1



2696



5 + Office



3.5

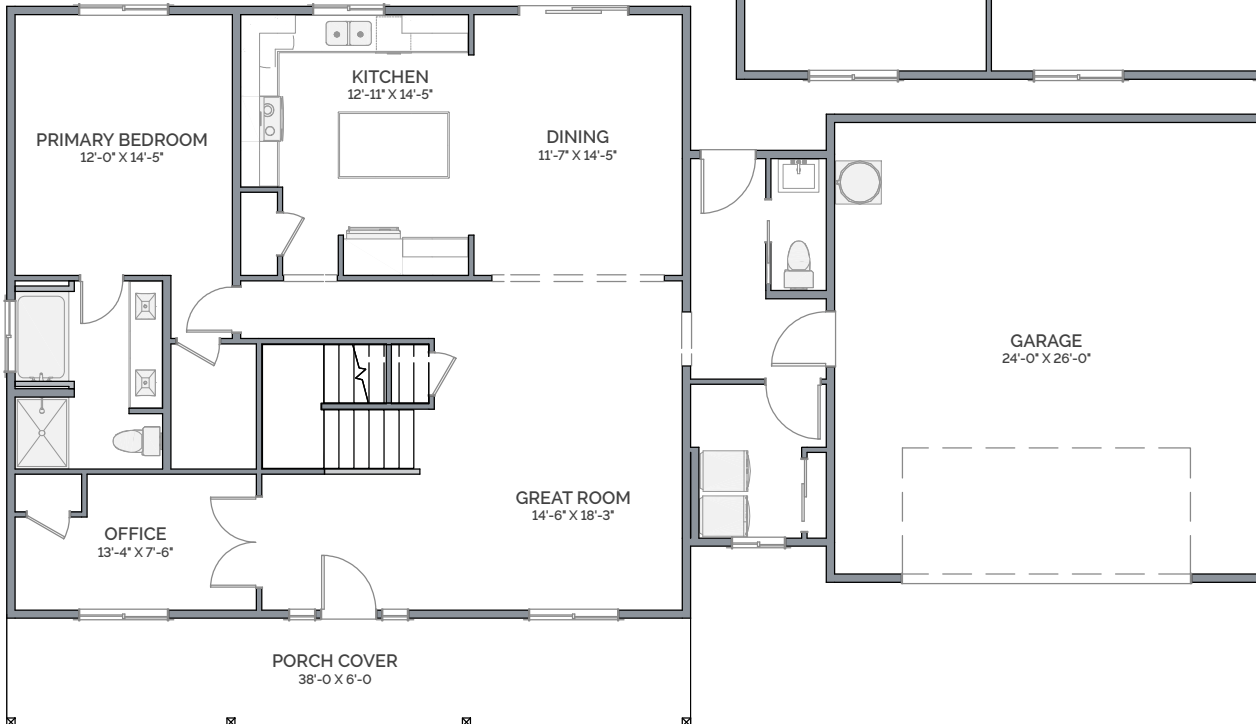
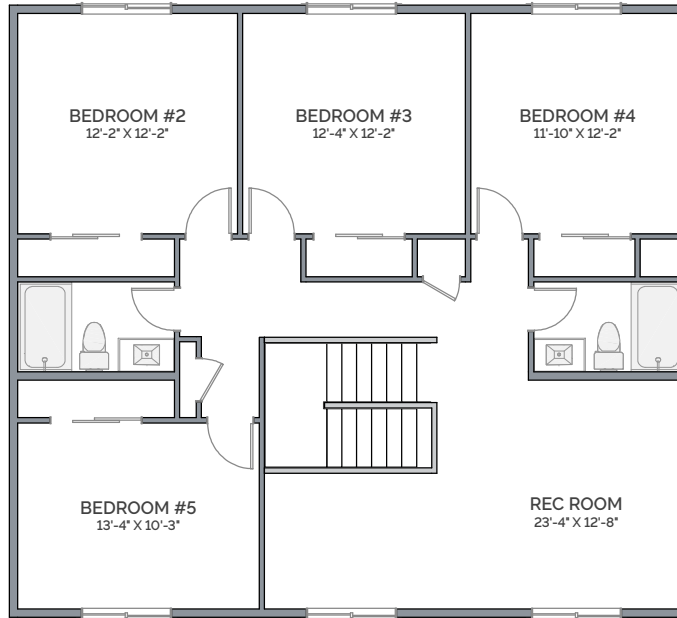


2

**LEXAR**  
— HOMES —

NOTE: Renderings may show optional finishes and features that are not included in the base pricing. Builder reserves right to modify plans, products, and specifications without notice.

SECOND FLOOR



MAIN FLOOR



POPULAR OPTIONS

VISIT YOUR HOME CONSULTANT FOR CURRENT PRICING.

- ▶ Wrap Around Porch Cover
- ▶ 3rd Bay Garage
- ▶ 9' Ceiling Height
- ▶ Fireplace with Built-In Shelving
- ▶ Upgraded Window Package



2023 © Copyright by Lexar Homes. All rights reserved. No use of this plan is permitted without the express written permission of Lexar Homes. Renderings may show optional finishes and features that are not included in the base pricing. Builder reserves the right to change plans and specifications without notice. LEXARH\*909QT

V1.0

Approx. square feet of living area

Countryside A-1 2696  
70' x 34'



FARMHOUSE

# COUNTRYSIDE A-2



2696



5 + Office



3.5

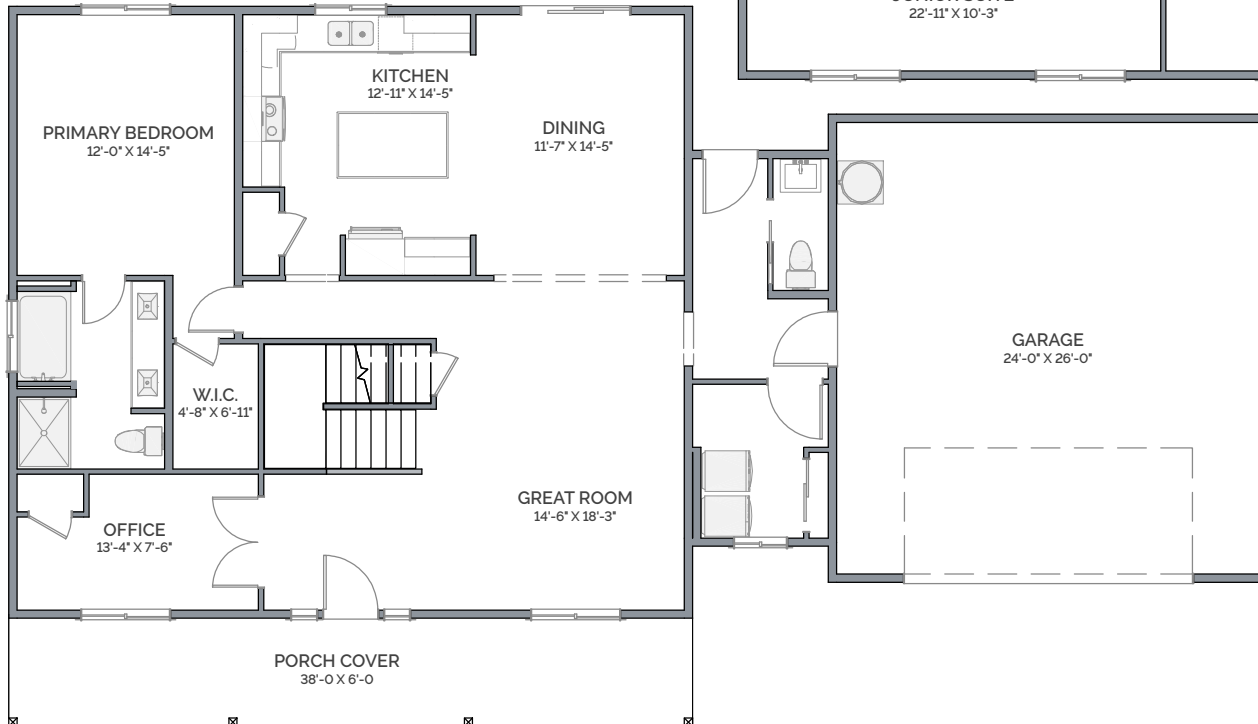
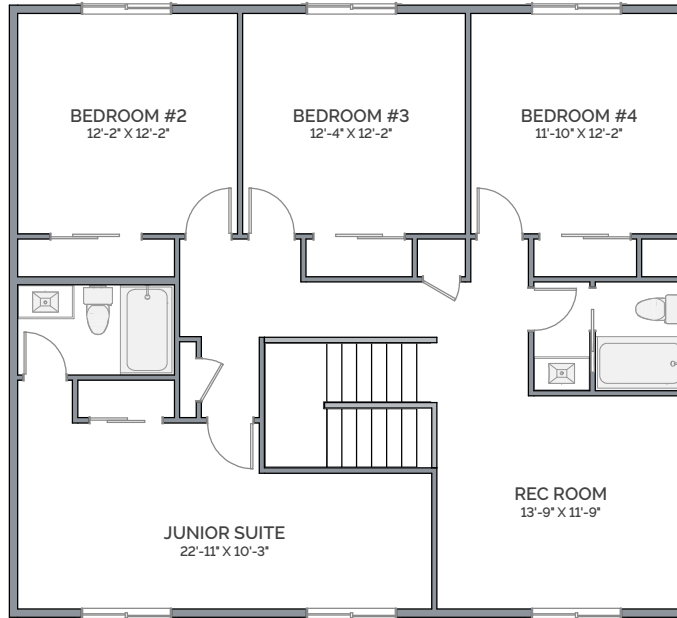


2

**LEXAR**  
— HOMES —

NOTE: Renderings may show optional finishes and features that are not included in the base pricing. Builder reserves right to modify plans, products, and specifications without notice.

SECOND FLOOR



MAIN FLOOR



POPULAR OPTIONS

VISIT YOUR HOME CONSULTANT FOR CURRENT PRICING.

- ▶ Wrap Around Porch Cover
- ▶ 3rd Bay Garage
- ▶ 9' Ceiling Height
- ▶ Fireplace with Built-In Shelving
- ▶ Upgraded Window Package



2023 © Copyright by Lexar Homes. All rights reserved. No use of this plan is permitted without the express written permission of Lexar Homes. Renderings may show optional finishes and features that are not included in the base pricing. Builder reserves the right to change plans and specifications without notice. LEXARH\*909QT

V1.0  
 Approx. square feet of living area  
**Countryside A-2 2696**  
 70' x 34'



FARMHOUSE

# COUNTRYSIDE B-1



2696



5



3.5

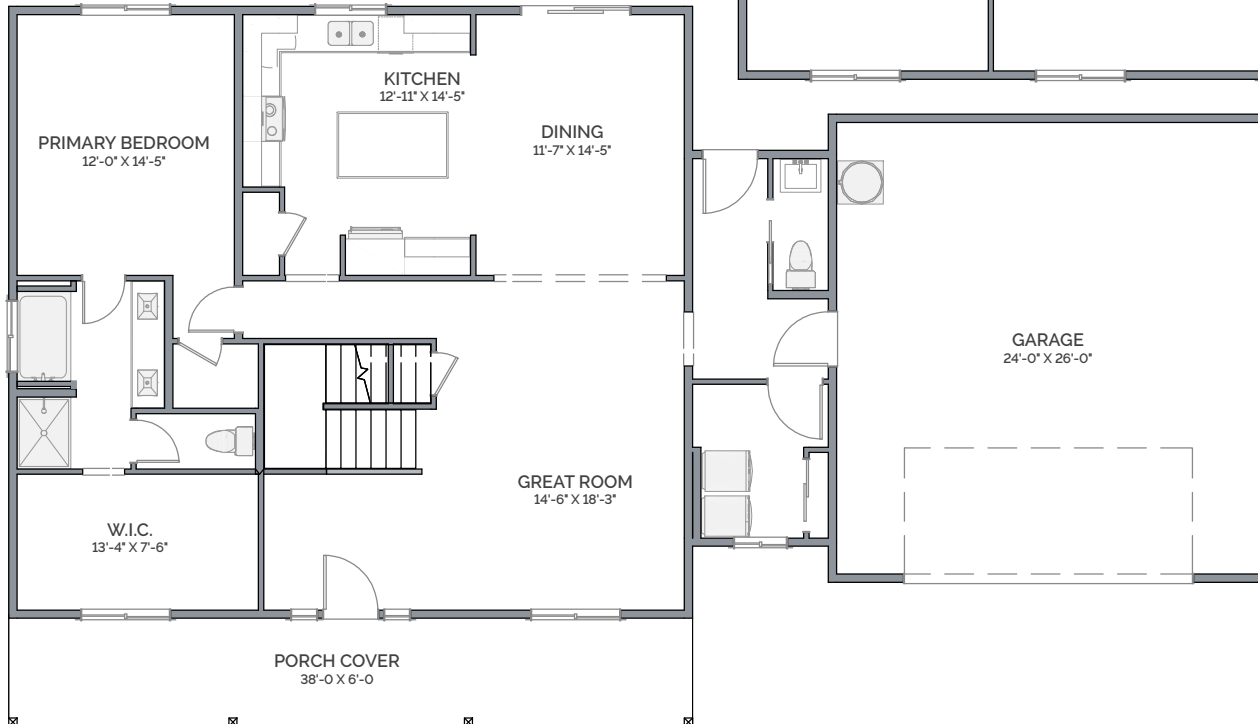
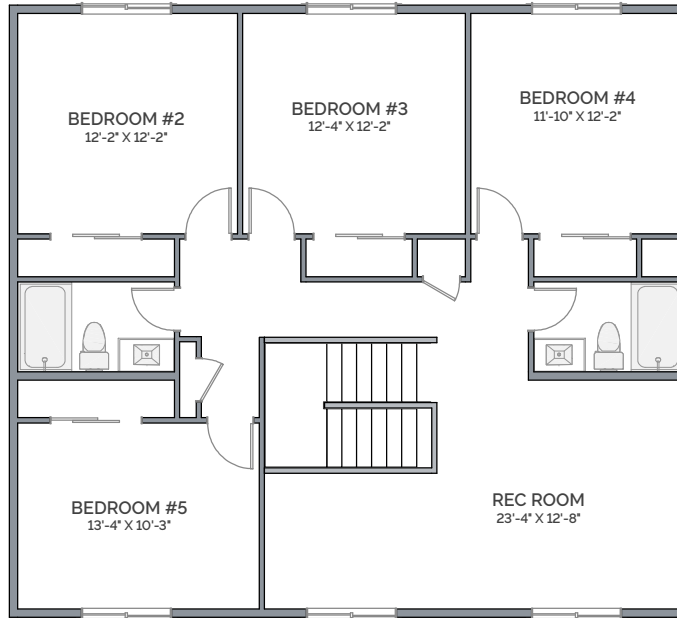


2

**LEXAR**  
— HOMES —

NOTE: Renderings may show optional finishes and features that are not included in the base pricing. Builder reserves right to modify plans, products, and specifications without notice.

SECOND FLOOR



MAIN FLOOR



POPULAR OPTIONS

VISIT YOUR HOME CONSULTANT FOR CURRENT PRICING.

- ▶ Wrap Around Porch Cover
- ▶ 3rd Bay Garage
- ▶ 9' Ceiling Height
- ▶ Fireplace with Built-In Shelving
- ▶ Upgraded Window Package



2023 © Copyright by Lexar Homes. All rights reserved. No use of this plan is permitted without the express written permission of Lexar Homes. Renderings may show optional finishes and features that are not included in the base pricing. Builder reserves the right to change plans and specifications without notice. LEXARH\*909QT

V1.0

Approx. square feet of living area

Countryside B-1 2696  
70' x 34'



FARMHOUSE

# COUNTRYSIDE B-2



2696



5



3.5

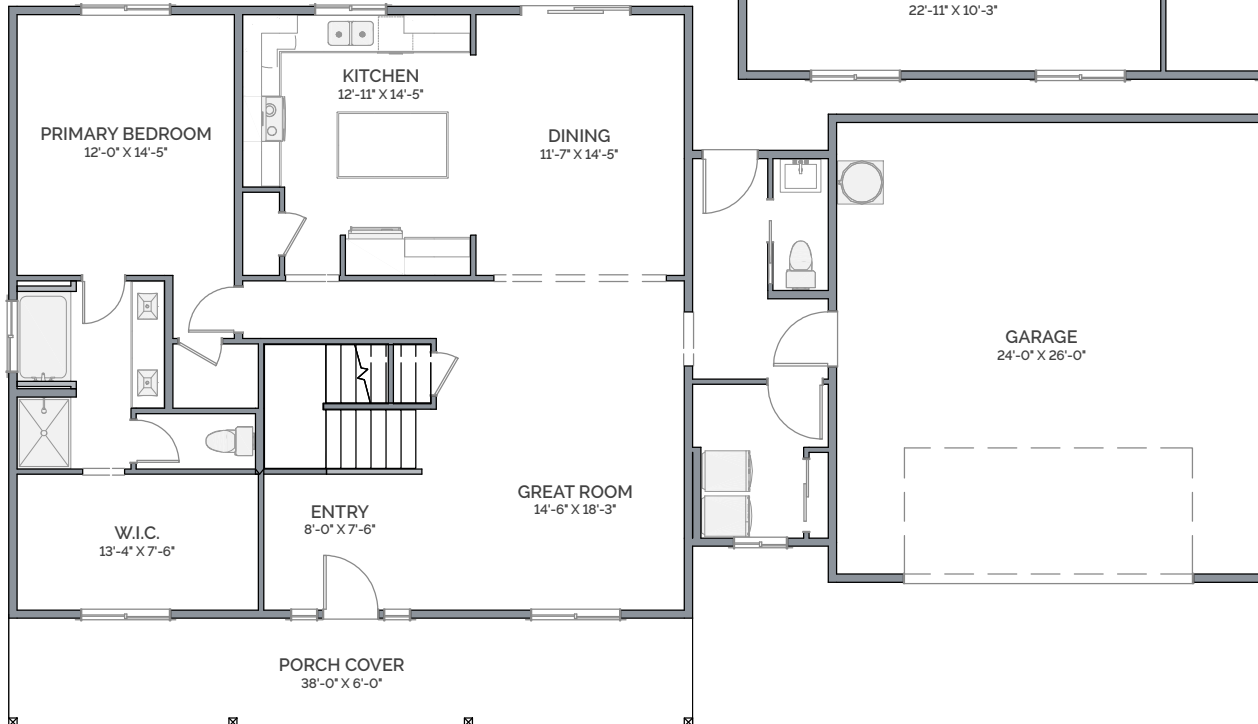
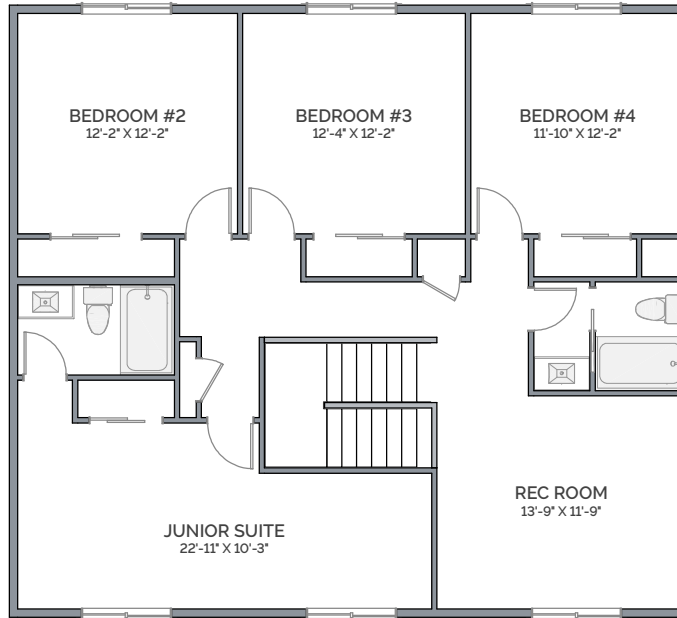


2

**LEXAR**  
— HOMES —

NOTE: Renderings may show optional finishes and features that are not included in the base pricing. Builder reserves right to modify plans, products, and specifications without notice.

SECOND FLOOR



MAIN FLOOR



POPULAR OPTIONS

VISIT YOUR HOME CONSULTANT FOR CURRENT PRICING.

- ▶ Wrap Around Porch Cover
- ▶ 3rd Bay Garage
- ▶ 9' Ceiling Height
- ▶ Fireplace with Built-In Shelving
- ▶ Upgraded Window Package



2023 © Copyright by Lexar Homes. All rights reserved. No use of this plan is permitted without the express written permission of Lexar Homes. Renderings may show optional finishes and features that are not included in the base pricing. Builder reserves the right to change plans and specifications without notice. LEXARH\*909QT

V1.0  
 Approx. square feet of living area  
**Countryside B-2**  
 70' x 34' **2696**