



SIGNATURE

# MEADOWGROVE



2044



3



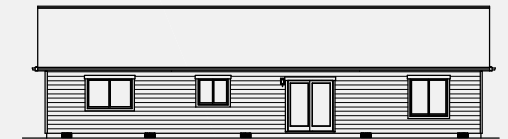
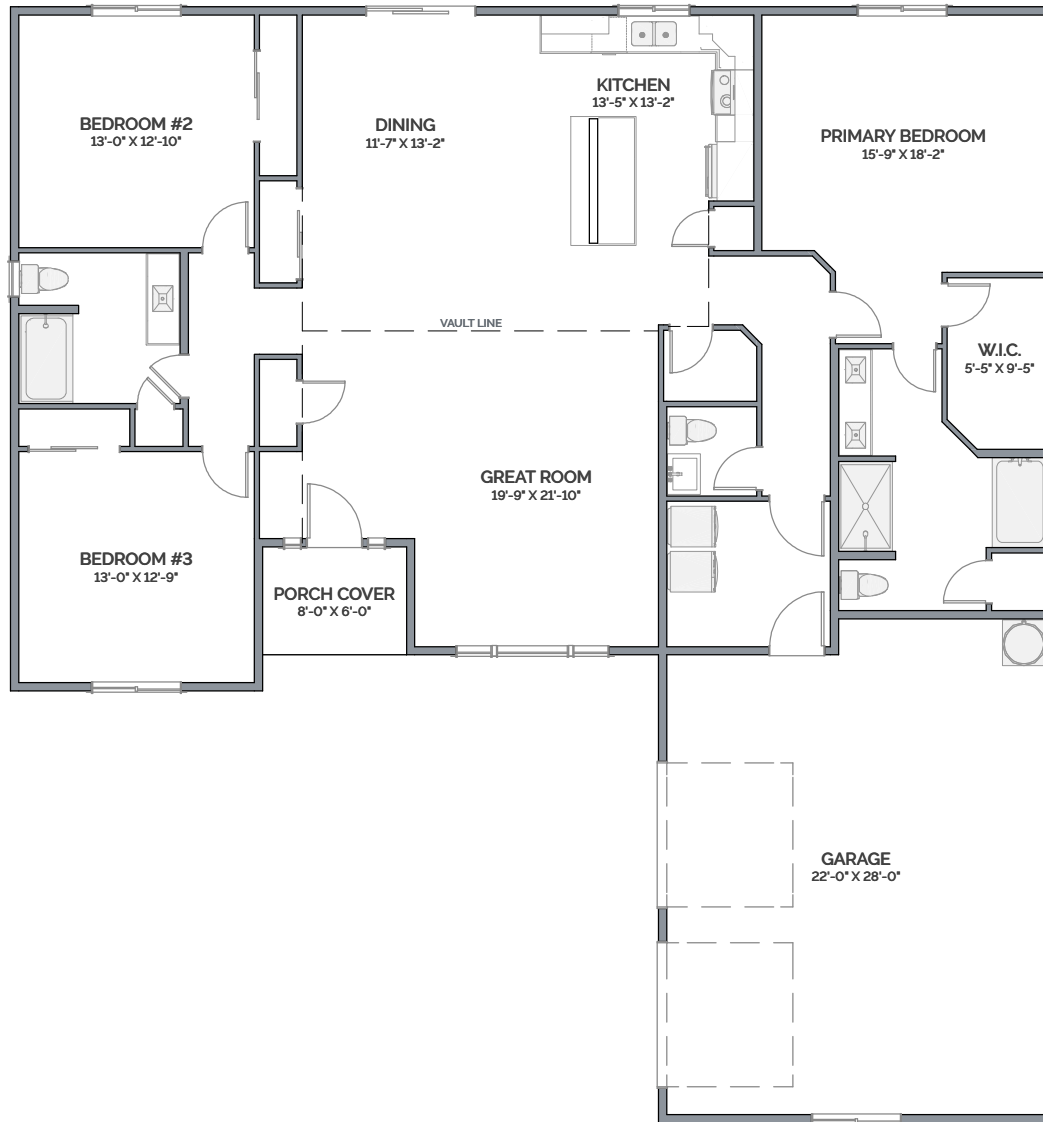
2.5



2



NOTE: Renderings may show optional finishes and features that are not included in the base pricing. Builder reserves right to modify plans, products, and specifications without notice.



Enter into an open living area with 755 square feet of space and clear line of sight from the front of your home to the back.

**POPULAR OPTIONS**

VISIT YOUR HOME CONSULTANT FOR CURRENT PRICING.

- ▶ Covered Outdoor Living Space
- ▶ 3-Car Garage
- ▶ 9' Ceiling Height
- ▶ Fireplace with Built-In Shelving
- ▶ Outdoor Kitchen



2023 © Copyright by Lexar Homes. All rights reserved. No use of this plan is permitted without the express written permission of Lexar Homes. Renderings may show optional finishes and features that are not included in the base pricing. Builder reserves the right to change plans and specifications without notice. LEXARH\*909QT

V1.0

Approx. square feet of living area

**MEADOWGROVE 2044**  
58' x 63'