



TIMBER

# MOUNTAIN VISTA



1572



3



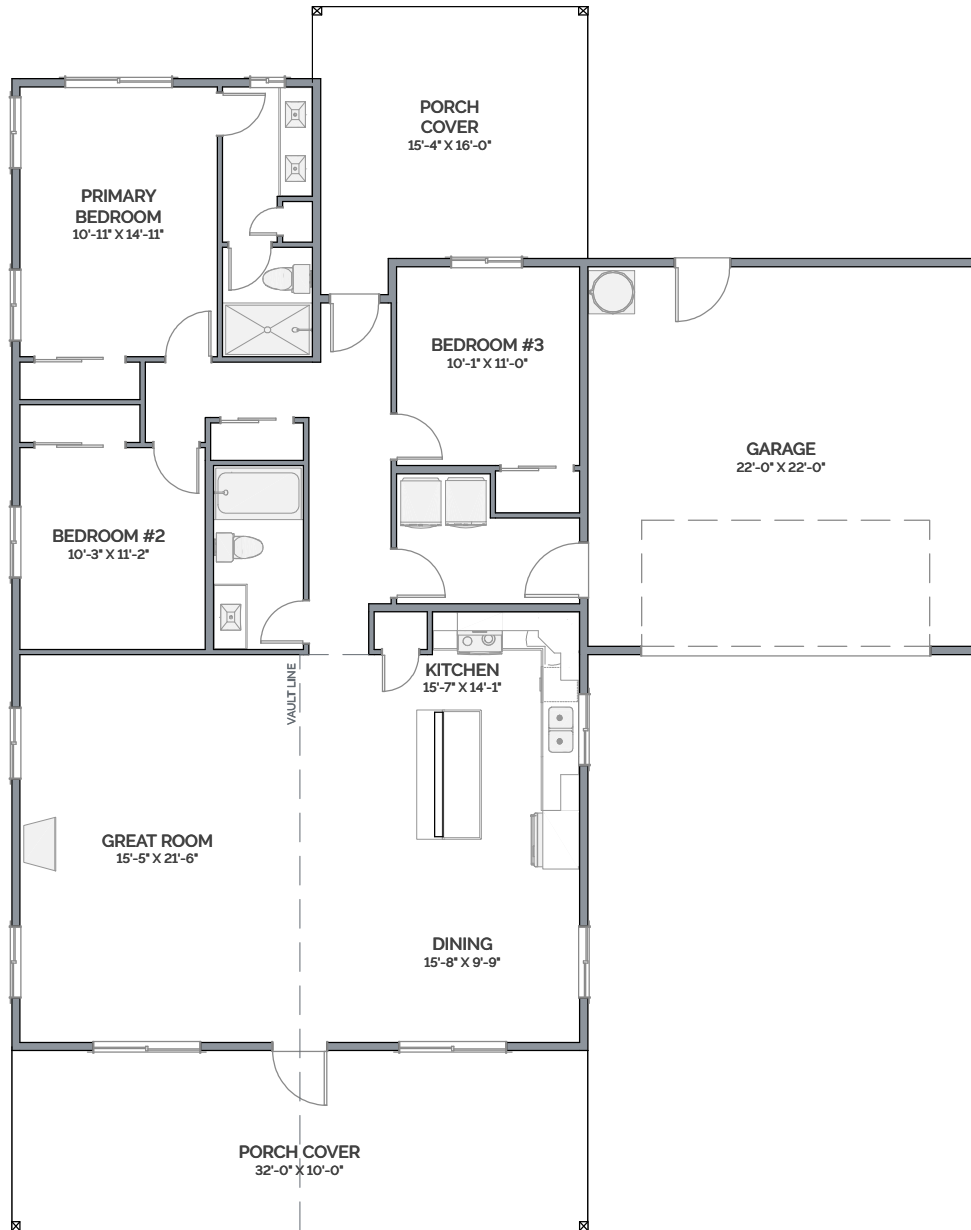
2



2

**LEXAR**  
— HOMES —

NOTE: Renderings may show optional finishes and features that are not included in the base pricing. Builder reserves right to modify plans, products, and specifications without notice.



One of our most popular plans for homeowners with limited space that includes most sought after features.

### PREMIUM INCLUSIONS

VISIT YOUR HOME CONSULTANT FOR CURRENT PRICING.

- ▶ HVAC-Forced Air with Energy Star Rated Heat Pump
- ▶ Smart Home Ready
- ▶ Durable High Grade Luxury Vinyl Plank Flooring
- ▶ Trendy and Stylish Fixtures to Suit Your Style
- ▶ Premium Staggered Beech Cabinets with Crown Molding, Pulls and Knobs



2023 © Copyright by Lexar Homes. All rights reserved. No use of this plan is permitted without the express written permission of Lexar Homes. Renderings may show optional finishes and features that are not included in the base pricing. Builder reserves the right to change plans and specifications without notice. LEXARH\*909QT

V1.0

Approx. square feet of living area

# MOUNTAIN VISTA 1572

54' x 68'